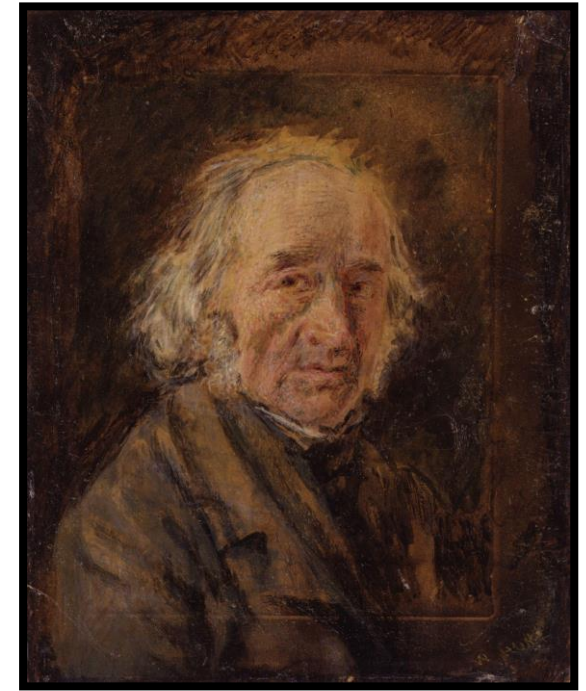


Victorian Realism

The Victorian era was between 20 Jun 1837 – 22 Jan 1901.

Realism refers to the faithful representation of the real world in literature and art dating from the 1850s.

This means that artists and painters tried their best to paint or draw objects exactly as they looked. Natural objects, such as flowers or fruit, were creatively grouped together, then painted or drawn. These arrangements are called 'still life' because they do not move.



William Henry Hunt

Colour Skills

Use paint to make hues, tints, tones, shades & mood.

Choose and make colours for a purpose.

Art Year 4 and 5 Still Life Painting and Victorian Realism

Drawing Skills

Use the effect of light on objects from different directions.

Interpret the texture of a surface.

